



➤ **KEEP YOUR MACHINE PROTECTED**

Ensure your devices are up-to-date with the latest anti-virus.

➤ **USE HTTPS WHEN VISITING WEBSITES**

Instead of typing "http://" before a website, type "https:" before typing in the web address. Eg: <https://www.facebook.com>

➤ **NEVER AUTOMATICALLY CONNECT TO WiFi HOTSPOTS**

Ensure your device WiFi setting is not on default. Turn off your WiFi setting when you are not actively using the internet.



STEP 1



STEP 2

➤ **DOUBLE CHECK NETWORK NAME BEFORE CONNECTING TO ANY WiFi HOTSPOTS**

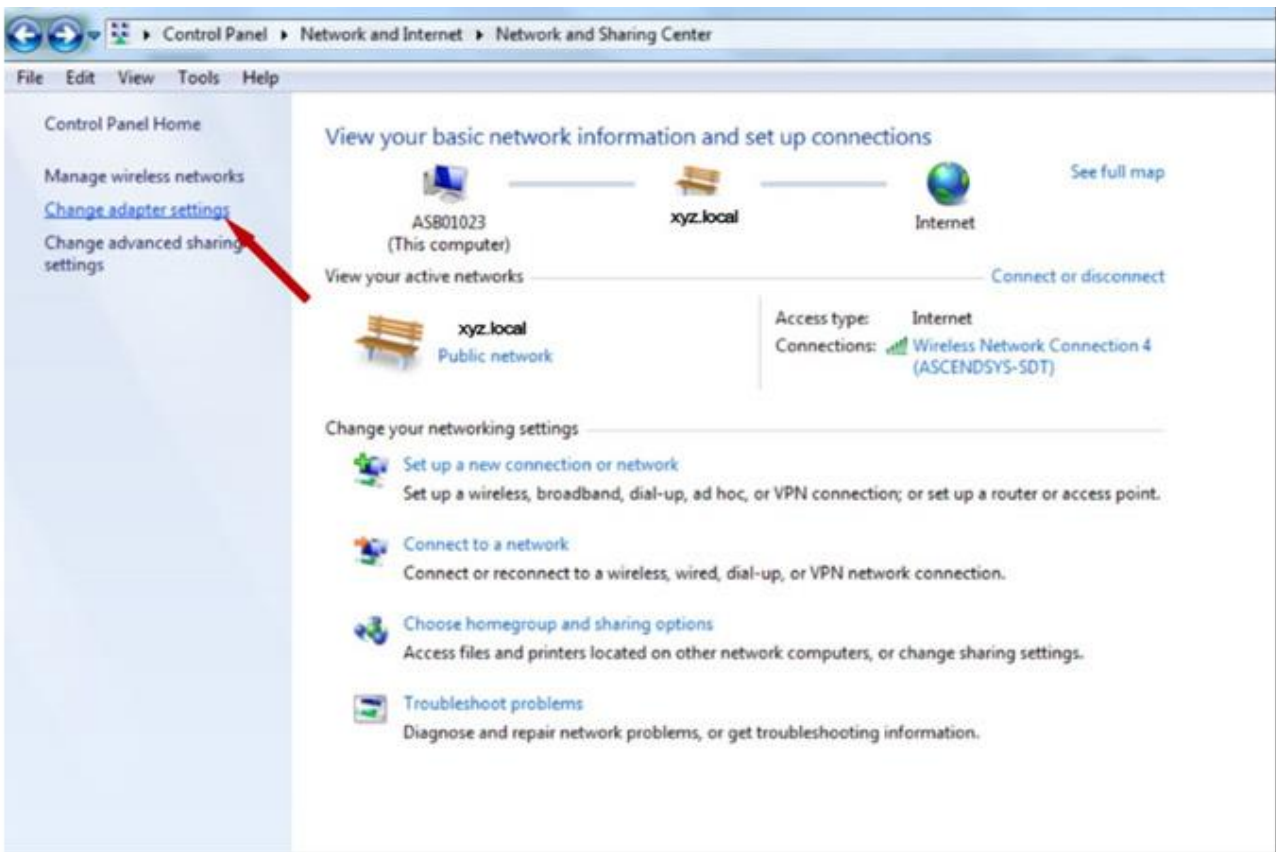
Always be sure to ask employees of the cafe what the exact name of the network is. If there is no one around to ask, don't take the risk, there are plenty of other secured public Wi-Fi network to choose from .

Pesanan Tips Keselamatan Siber ini dibawa oleh MAMPU, Jabatan Perdana Menteri

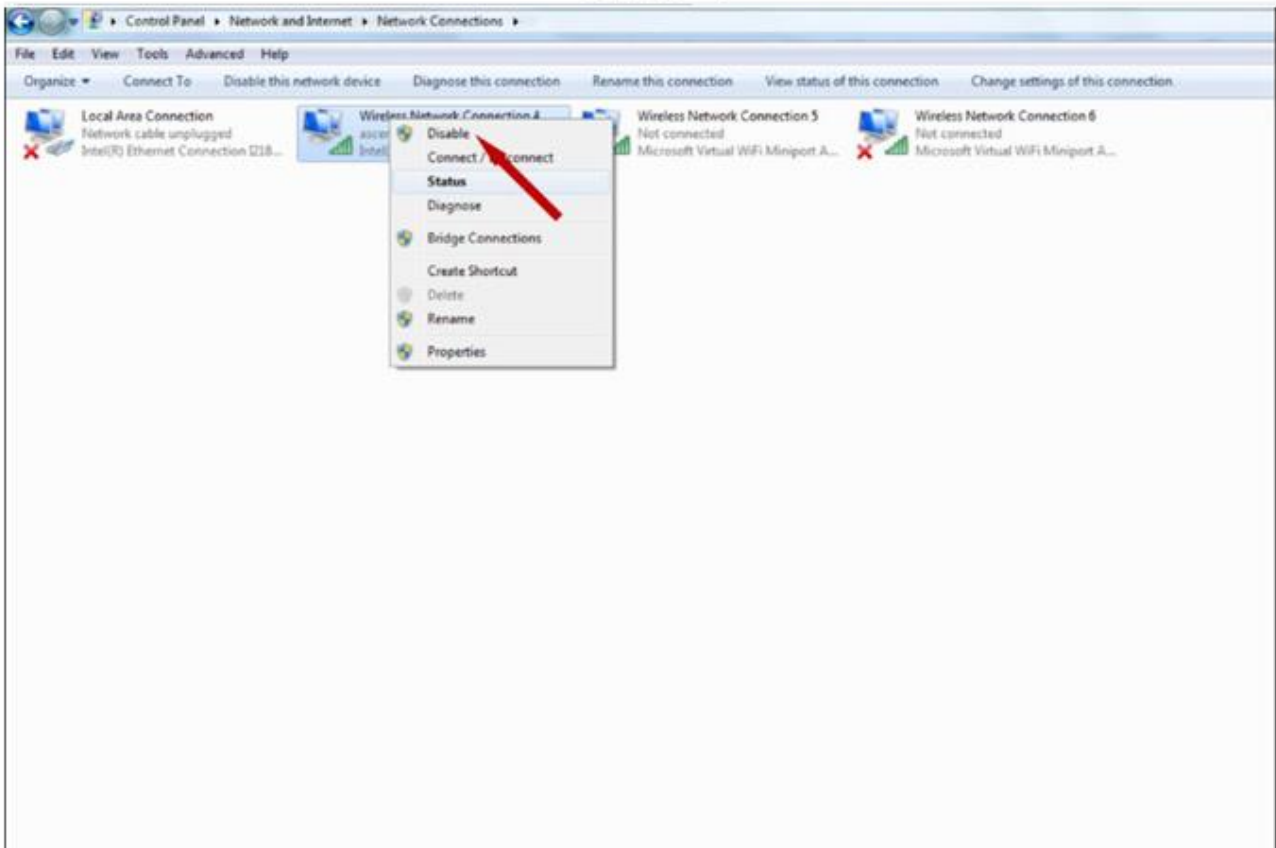


**MAMPU**  
BERSAMA-SAMA MELAKSANAKAN TRANSFORMASI

UNIT PEMCOBANAN TADBIRAN DAN PERANCANGAN PENGURUSAN MALAYSIA



## STEP 1



## STEP 2